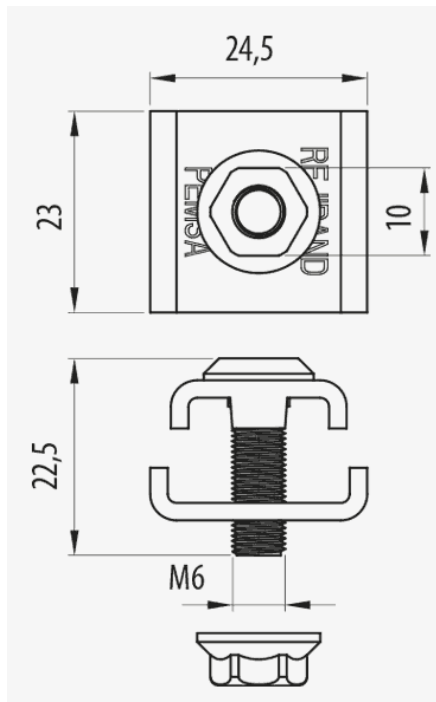
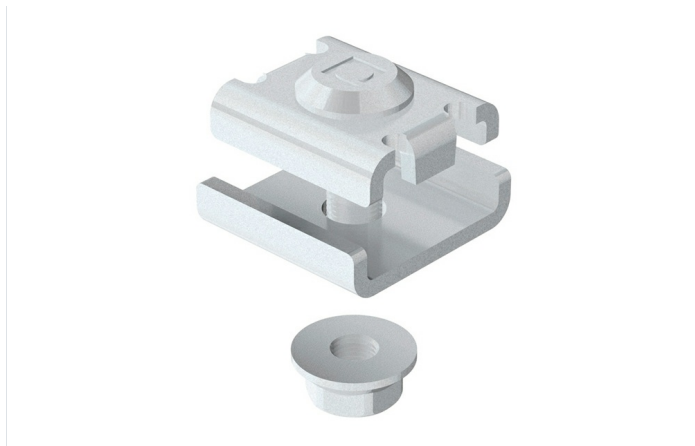


**Reinforced Joint Clamp**



**Description**

Steel component for joining sections of Rejiband trays consisting of a captive screw, connecting plate and a nut. Thanks to its construction, it greatly simplifies the joint between sections and ensures the greater mechanical strength of the joint between trays, optimizing the possible maximum load values. It is available in various Protection Systems.

**Advantages**

- Simplification of the joint assembly between different sections.
- Greater mechanical strength of the section joints.
- N Mark of Aenor, UL Certificate, Certificate IECC CB according to IEC 61537.
- E90 fire resistance (90 minutes, 1000°C) according to DIN 4102-12.
- Available in different protection systems: EZ and GC stainless steel AISI 316.

**Applications**

Suitable for the joining of sections of Rejiband trays for electrical and/or telecommunications installations in: Civil Works, Tunnels, Car Parks, Public Buildings, Shopping Centres, Major Infrastructures, Airports, Underground and Railway, Tertiary sector and industrial applications: Naval, Petrochemical, Textile, Chemical and Food.

**Solutions**



INDUSTRIA ALIMENTARIA



[www.pemsa-rejiband.com](http://www.pemsa-rejiband.com)

Any information included in this document is property of Pemsa®. It cannot be copied, total or partially, nor disclosed to third parties nor used without the explicit and written authorization by Pemsa®. These documents total or partially, can be subject to patent and/or be patent pending and therefore protected by intellectual and industrial property rights. Pemsa, Rejiband, Pemsaband, Inducanal, Rejitech, Megaband, Pemsaflex are registered trademarks property of "Pemsa Cable Management, S.A."



**Reinforced Joint Clamp**

**Main technical characteristics**

50	-50 / 150 °C	E90 (90 min. 1000°C)	ETIM EC002413
----	--------------	----------------------	------------------

**Product data**

Ⓢ	Class	REF	kg/l	Ⓜ
EZ	Class 3	64010061	0.029	Steel with surface coating
GC	Class 8	64030061	0.030	Steel with surface coating
INOX	Class 9D	64060061	0.029	Acero inoxidable AISI 316L
BK8	Class 8	64080061	0.030	Steel with surface coating

**Ⓢ Protection System**

- CU - Copper electroplated
- PG - Pregalvanised
- EZ - Electrogalvanised
- BC - Electrogalvanised Bichromate
- BK8 - High Resistance Coating
- GC - Hot Dip Galvanising
- INOX - Stainless Steel
- PT - Polyester Paint
- AL - Aluminum
- LN - Brass or Nickel-plated brass

**Ⓜ Insulating materials**

- PC+ABS - Halogen Free Polycarbonate + ABS
- PVC - Polyvinyl Chloride
- PP - Halogen Free Polypropylene
- PA6 - Halogen Free Polyamide 6
- PA12 - Halogen Free Polyamide 12
- PU - Polyurethane
- PE - Polyethylene
- NBR - NBR rubber
- PET - Thermoplastic Polyester
- TPV - Thermoplastic



**Reinforced Joint Clamp**

**Product applications**

