

Product Datasheet

SKM-30

Coupling Socket

The SKM-30 is a coupling sleeve for cable protection conduits with an outer diameter of 30 mm. This sleeve is used to securely connect two conduit ends or bends, providing a reliable and mechanically stable joint in various installations.

Technical specifications

Application:	Connecting Ø30 mm cable protection tubes and bends
For conduit diameter:	30 mm
Compatible with:	SR-30 and SRL-30 cable protection tubes
Outer diameter:	33.4 mm
Inner diameter:	30.4 mm
Length:	Approx. 80 mm
Wall thickness:	1.5 mm
General tolerance:	0.5 mm
Angle tolerance:	0.5°
Includes:	2x M6 fastening sets
Mounting:	Insert both tube ends into the sleeve and tighten the fastening sets
Weight:	0.13 – 0.15 kg/unit

Available variants

Hot-dip galvanized steel (SR-30-FT)

For standard industrial applications

Material:	Cold-rolled structural steel S235JRG
Finish:	Hot-dip galvanized according to NEN-EN-ISO 1461 (min. 45 µm)
Layer:	60 - 80 µm

Stainless steel 304 (SR-30-ER2)

For enhanced corrosion resistance

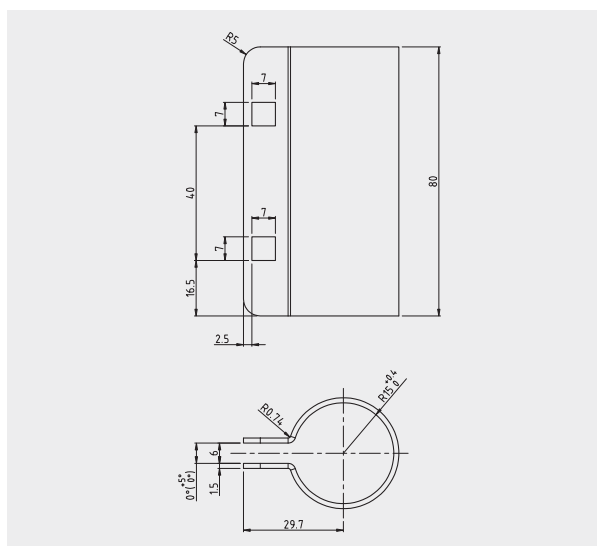
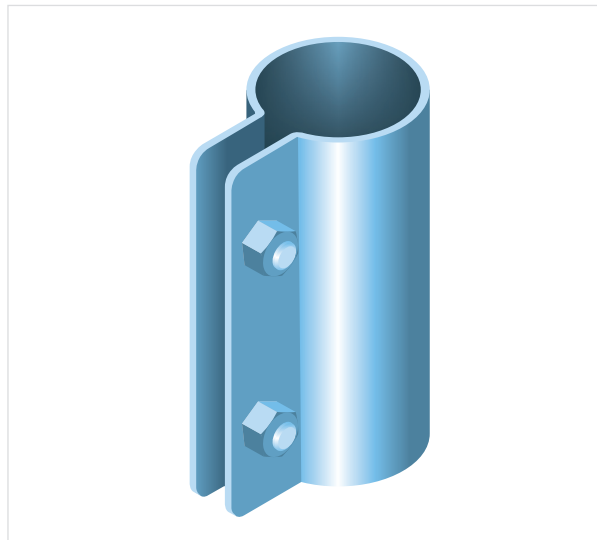
Material:	Stainless steel 304 (ER2)
Finish:	Pickled and passivated

Stainless steel 316L (SR-30-ER4)

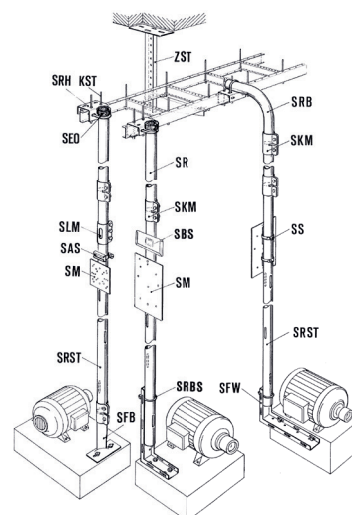
For highly corrosive environments

Material:	Stainless steel 316L (1.4404)
Finish:	Pickled and passivated

Article number	D mm	E mm	kg/unit
SKM-30-FT	30	1.5	0.15
SKM-30-ER2	30	1.5	0.13
SKM-30-ER4	30	1.5	0.13



Toepassing



Eurostrut®

Cable Management
Systems & Solutions

+ 31 10 522 33 51 | info@eurostrut.com | eurostrut.com

