

Product Datasheet

SFB-30

Floor Mounting with Angle 30mm

The SFW-30 is a 90° fixed-angle base plate, suitable for mounting cable protection conduits with a diameter of 30 mm. This base plate allows for secure installation of conduits on floors, walls, or ceilings where a right-angle connection is required.

Technical specifications

Application:	Fixing cable protection conduits to floor, wall, or ceiling
For conduit diameter:	30 mm
Compatible with:	SR-30 and SRL-30 cable protection tubes
Height:	200 mm
Width:	65 mm
Depth:	100 mm
Wall thickness:	1.5 mm
Mounting:	Attach to flat surface using screw holes. Conduit mounting with SRBS U-bolt set (not included)
Weight:	0.44 – 0.48 kg/unit

Available variants

Hot-dip galvanized steel (FT)

For standard industrial applications

Material: Cold-rolled structural steel S235JRG
Finish: Hot-dip galvanized according to NEN-EN-ISO 1461 (min. 45 µm)

Stainless steel 304 (ER2)

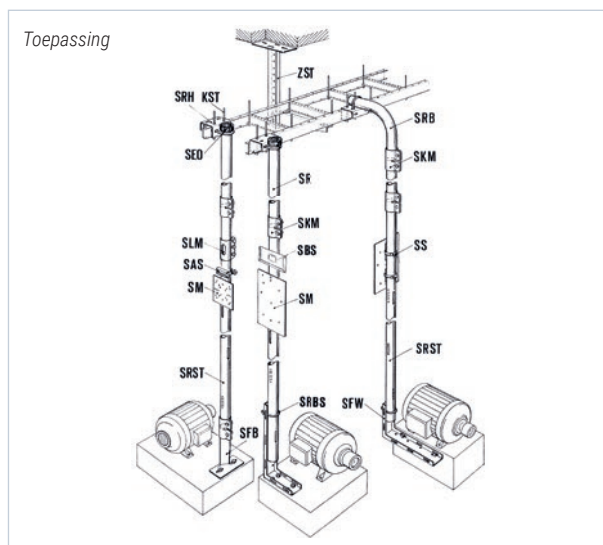
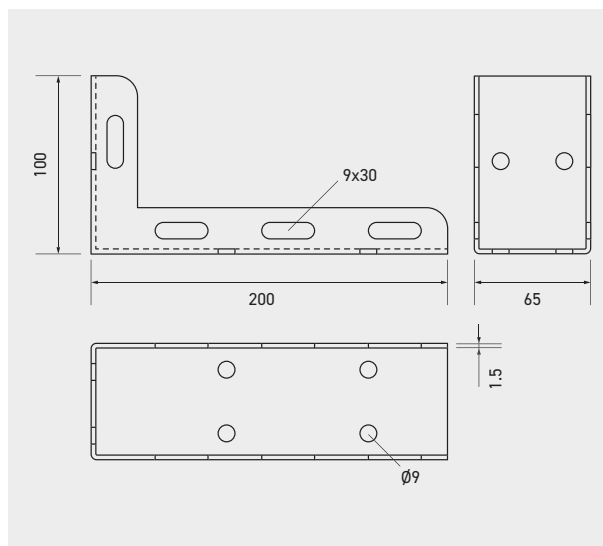
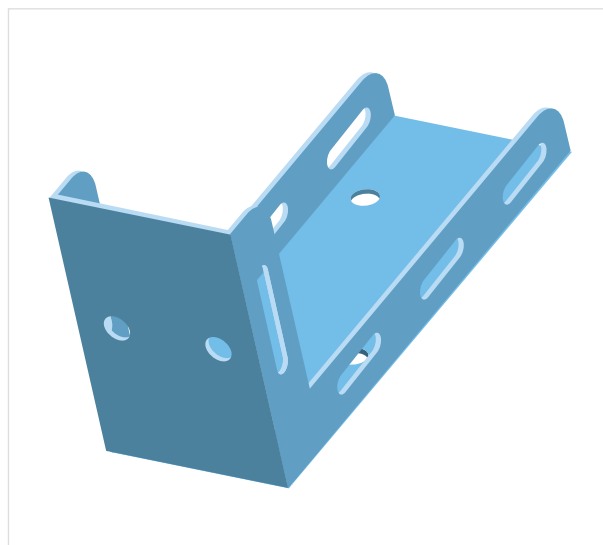
For enhanced corrosion resistance

Material: Stainless steel 304 (ER2)
Finish: Pickled and passivated

Stainless steel 316L (ER4)

For highly corrosive environments

Material: Stainless steel 316L (1.4404)
Finish: Pickled and passivated



Article number	D mm	E mm	kg/ unit
SFW-30-FT	30	1.5	0.48
SFW-30-ER2	30	1.5	0.44
SFW-30-ER4	30	1.5	0.44