

# Product Datasheet

## SAS-30

### Pipe Clamp with Mounting Profile 30mm

The SAS-30 is a sturdy tube clamp for mounting Ø30 mm cable protection tubes. This clamp is suitable for SR-30 and SRL-30 cable protection tubes and includes the SS9-30-ER2 hose clamp. Slot width: 16 mm.

#### Technical specifications

**Application:** Mounting cable protection tubes to a flat surface or structural supports

**For tube diameter:** 30 mm

**Compatible with:** SR-30 and SRL-30 cable protection tubes

**Includes:** Hose clamp SS9-30-ER2

**Weight:** 0.062 kg/unit

#### Available variants

##### Hot-dip galvanized steel (FT)

For standard industrial applications

**Material:** Cold-rolled structural steel S235JRG

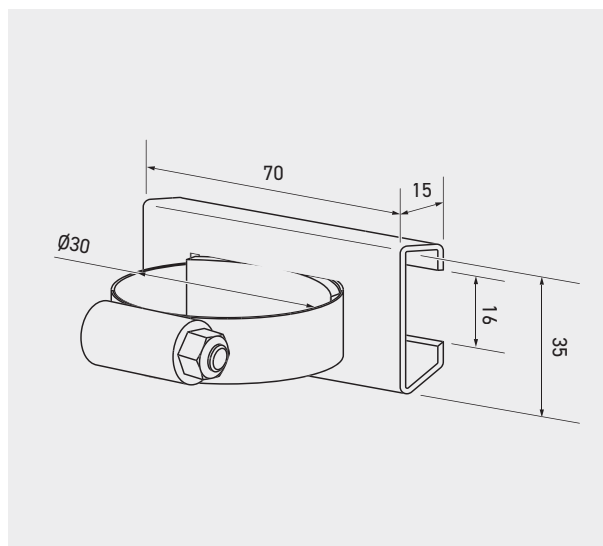
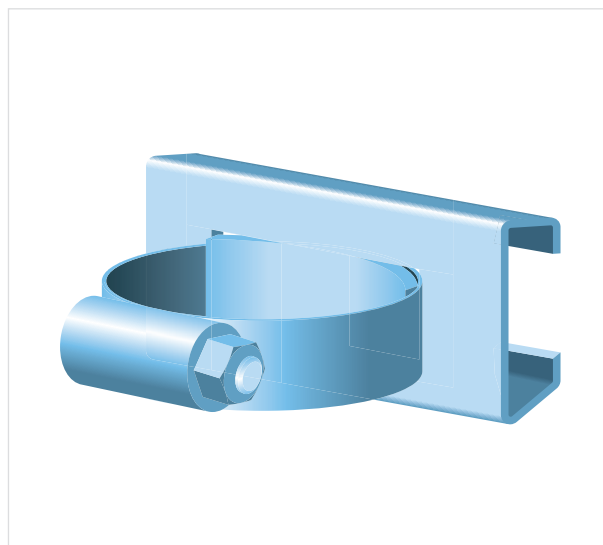
**Finish:** Hot-dip galvanized according to NEN-EN-ISO 1461 (min. 45 µm)

##### Stainless steel 304 (ER2)

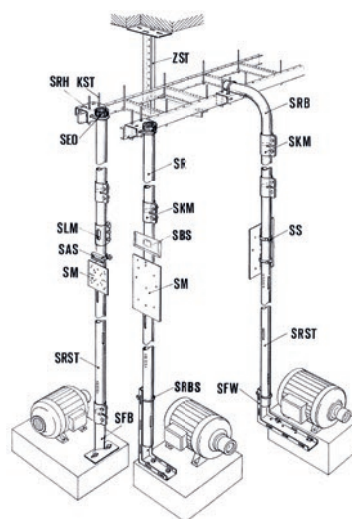
For enhanced corrosion resistance

**Material:** Stainless steel 304 (ER2)

**Finish:** Pickled and passivated



#### Toepassing



Article number	D mm	kg/unit
SAS-30-FT	30	0.062
SAS-30-ER2	30	0.062