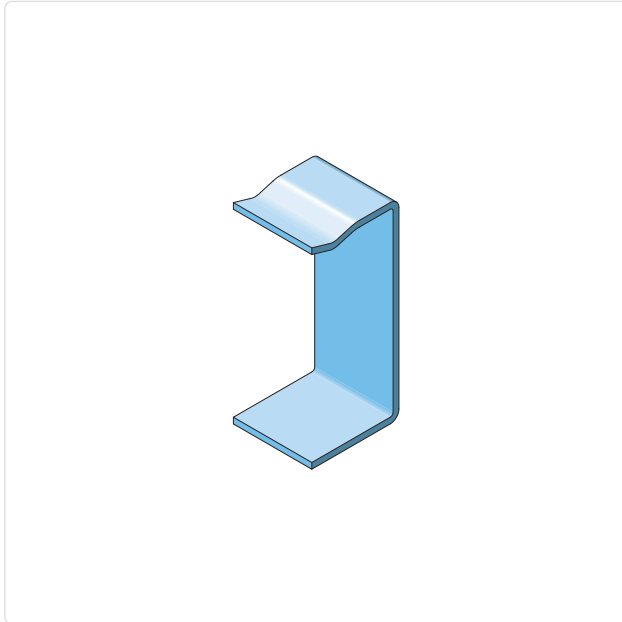


## ECTCC60

### Cover Clamp Clickable Cable Tray ECT60



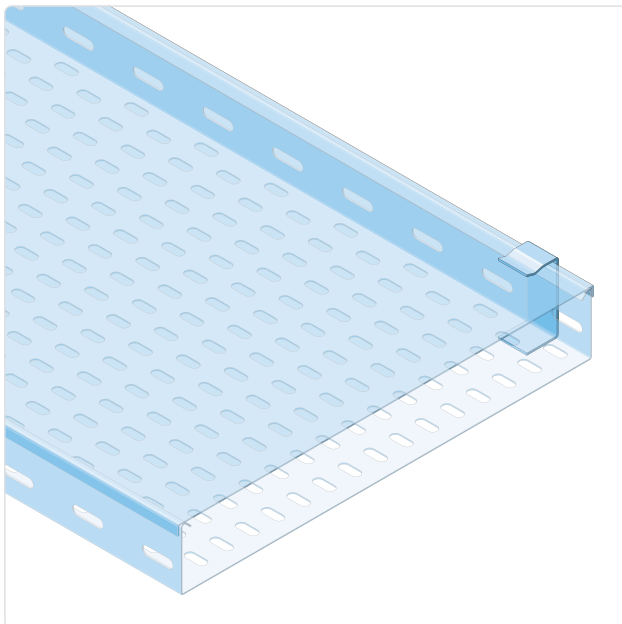
- ✓ Standard execution **hot dip galvanized carbon steel** in accordance with NEN-EN-ISO 1461
- ✓ High zinc coating thickness of **at least 90 µm**
- ✓ Also available in **pre-galvanized, stainless steel 316L** and **stainless steel 304**

#### Description

The ECTCC60 cover clamp is an accessory for the ECT60 cable tray system and is used to secure covers on cable trays and associated accessories with a system height of 60 mm. The cover clamp provides a fast, tool-free, and vibration-resistant fixation of the cover, ensuring a closed and safe cable route. This accessory is suitable for heavy industrial, utility, and infrastructure installations.

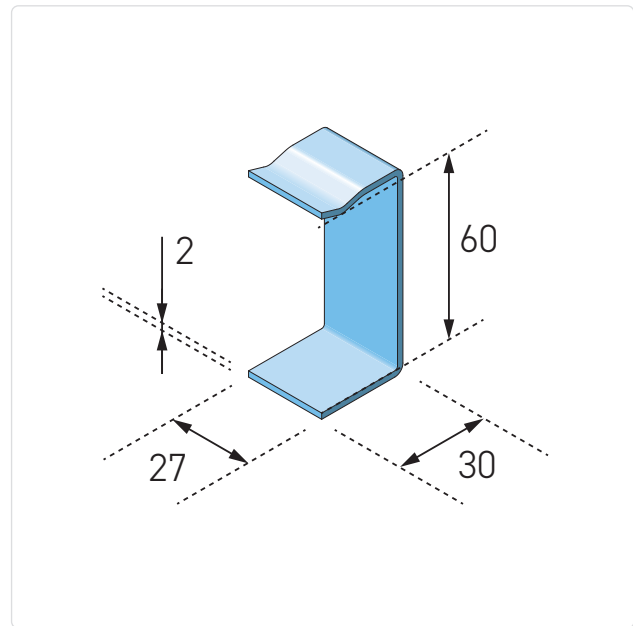
The standard execution is manufactured from hot-dip galvanized carbon steel in accordance with NEN-EN-ISO 1461, with a zinc coating thickness of at least 90 µm. This increased coating thickness provides durable corrosion protection and makes the cover clamp suitable for heavy industrial and outdoor environments. The hot-dip galvanizing process is applied after fabrication and protects the entire surface, including cut edges, in accordance with IEC 61537 and installations according to NEN 1010.

The cover clamp is designed as a snap-on fixing and is mounted directly onto the cable tray edge and cover without additional bolted connections. The construction, with a material thickness of 2 mm, ensures high mechanical strength and secure retention of the cover under dynamic loads. The clamp is fully compatible with ECT60 cable trays and all associated accessories.



## Technical specifications

<b>Product type:</b>	Clickable cover clamp for ECT cable tray
<b>System:</b>	ECT60
<b>System height:</b>	60 mm
<b>Material thickness:</b>	2.0 mm
<b>Length:</b>	30 mm
<b>Height:</b>	60 mm
<b>Width:</b>	27 mm
<b>Standard material:</b>	Carbon steel
<b>Surface treatment:</b>	Hot-dip galvanized in accordance with NEN-EN-ISO 1461
<b>Zinc coating thickness:</b>	Minimum 90 µm
<b>Execution:</b>	Cover clamp clickable
<b>Application:</b>	Connecting covers to cable trays and cable tray accessories
<b>Connection method:</b>	Snap-on connection
<b>Standards:</b>	IEC 61537, applicable within installations in accordance with NEN 1010



## Available material variants

**PG:** Pre-galvanized steel (EN 10346), suitable for dry indoor environments and light industrial applications.

**HDG:** Hot-dip galvanized carbon steel in accordance with NEN-EN-ISO 1461, with a high coating thickness of at least 80 µm, suitable for heavy industrial and outdoor environments.

**SS 304 (A2 / 1.4301):** Stainless steel for indoor environments and lightly corrosive conditions.

**SS 316L (A4 / 1.4404):** Stainless steel with increased corrosion resistance for chemical, maritime, and offshore applications.

### Variants

Article number	L mm	W mm	H mm	e mm	kg/ unit
ECTCC60-HDG	30	30	60	2.0	0.06
ECTCC60-PG	30	30	60	2.0	0.06
ECTCC60-SS316	30	30	60	2.0	0.06
ECTCC60-SS304	30	30	60	2.0	0.06

