

Product Datasheet

SLM-30

Coupling Socket with Cable Output

The SLM-30-FT is an open coupling sleeve for cable protection conduits with an outer diameter of 30 mm. This sleeve features a laser-cut cable entry opening of 60x29 mm, allowing cables to be inserted at an intermediate point without interrupting the conduit. This makes it ideal for inspectable or modular installations.

Technical specifications

Application:	Connecting Ø30 mm cable protection conduits and bends
Outer diameter:	34.2 mm
Inner diameter:	30.8 mm
Length:	Approx. 130 mm
Opening:	Laser-cut cable entry opening 60x29 mm
Wall thickness:	1.5 mm
General tolerance:	ISO 2768-mK; 0.5–6 ± 0.1; 6–30 ± 0.2; 30–120 ± 0.3; 120–400 ± 0.5
Angle tolerance:	1°
Includes:	2x M6 fastening sets
Mounting:	Insert both conduit ends into the sleeve and tighten the fastening sets
Weight:	0.17 - 0.18 kg/unit

Available variants

Hot-dip galvanized steel (SR-30-FT)

For standard industrial applications

Material:	Cold-rolled structural steel S235JRG
Finish:	Hot-dip galvanized according to NEN-EN-ISO 1461 (min. 45 µm)
Layer:	60 - 80 µm

Stainless steel 304 (SR-30-ER2)

For enhanced corrosion resistance

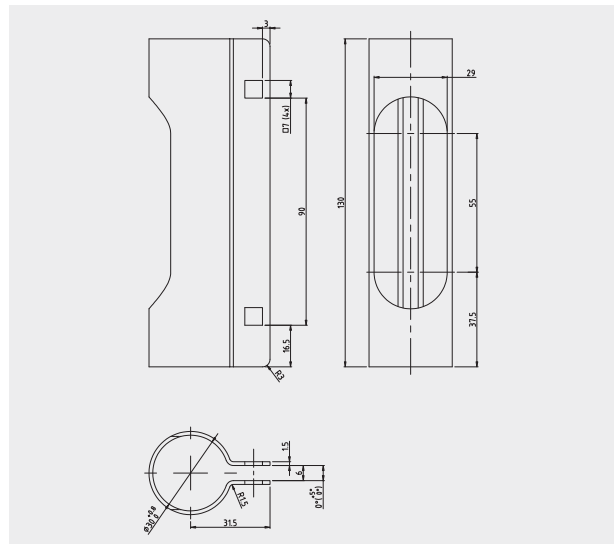
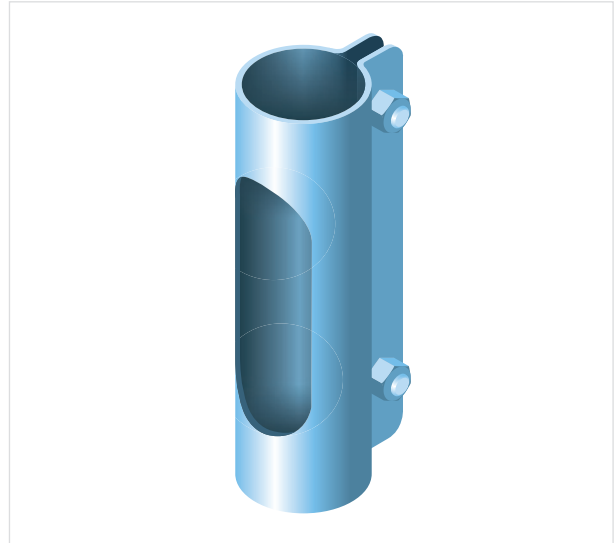
Material:	Stainless steel 304 (ER2)
Finish:	Pickled and passivated

Stainless steel 316L (SR-30-ER4)

For highly corrosive environments

Material:	Stainless steel 316L (1.4404)
Finish:	Pickled and passivated

Article number	D mm	E mm	kg/unit
SLM-30-FT	30	1.5	0.18
SLM-30-ER2	30	1.5	0.17
SLM-30-ER4	30	1.5	0.17



Toepassing

