

Product Datasheet

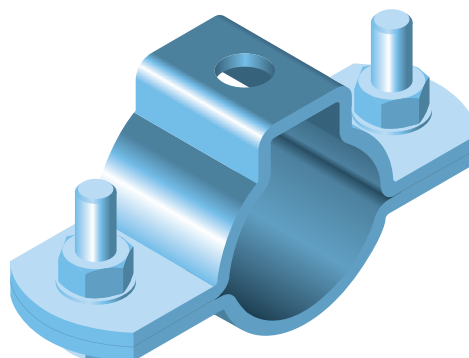
SBD-30

Tread/Pendant Pipe Clamp 30mm

The SBD-30 is a heavy-duty mounting bracket (cap bracket set) for installing cable protection tubes with a diameter of 30 mm onto walls, ceilings, or structural supports. This bracket is specifically designed for use with SR-30 and SRL-30 cable protection tubes.

Technical specifications

Application:	Mounting cable protection tubes to a flat surface or structural supports
For tube diameter:	30 mm
Compatible with:	SR-30 and SRL-30 cable protection tubes
Wall thickness:	3 mm
Includes:	2× fastening sets (nut, bolt, and washer)
Mounting:	Recessed side for M8 nut or threaded rod
Weight:	0.44–0.48 kg/unit



Available variants

Hot-dip galvanized steel (FT)

For standard industrial applications

Material: Cold-rolled structural steel S235JRG

Finish: Hot-dip galvanized according to NEN-EN-ISO 1461 (min. 45 µm)

Layer: 60 - 80 μm

Stainless steel 304 (ER2)

For enhanced corrosion resistance

Material: Stainless steel 304 (ER2)

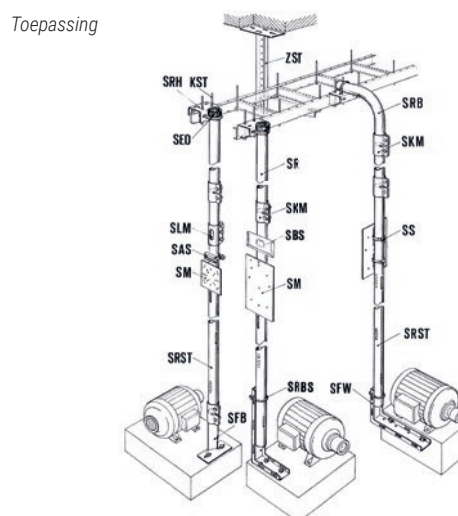
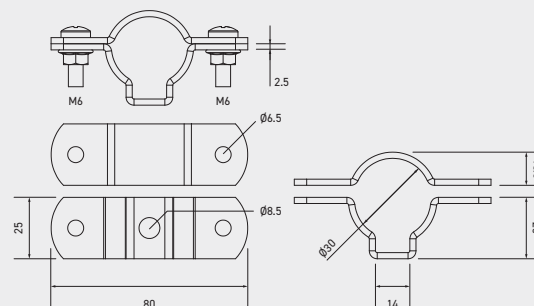
Finish: Pickled and passivated

Stainless steel 316L (ER4)

For highly corrosive environments

Material: Stainless steel 316L (1.4404)

Finish: Pickled and passivated



Article number	D mm	E mm	kg/ unit
SBD-30-FT	30	2.5	0.48
SBD-30-ER2	30	2.5	0.44
SBD-30-ER4	30	2.5	0.44